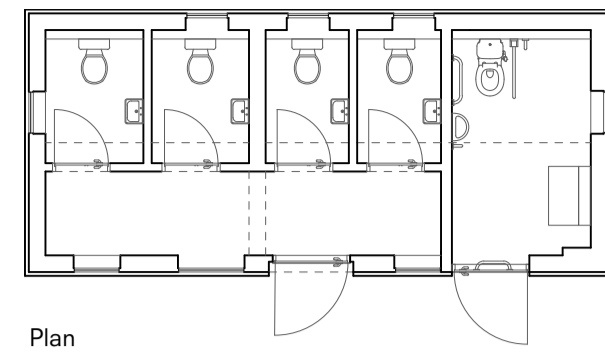
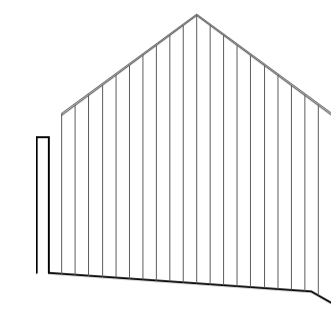


TOILET BUILDING

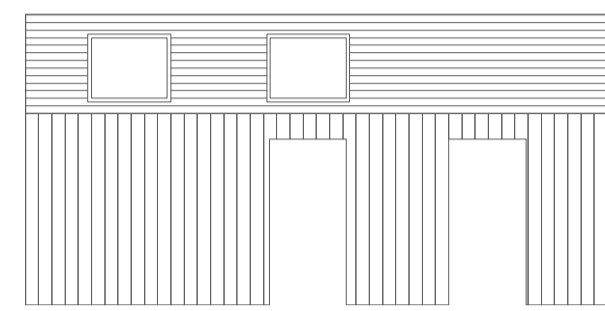
materials:
 black stained timber boarded walls
 dark slate roof with flush rooflights
 black stained timber doors



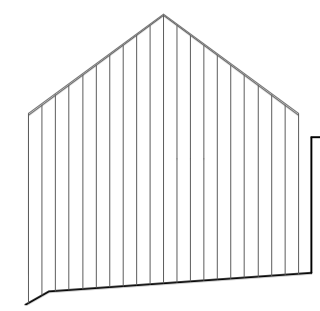
Plan



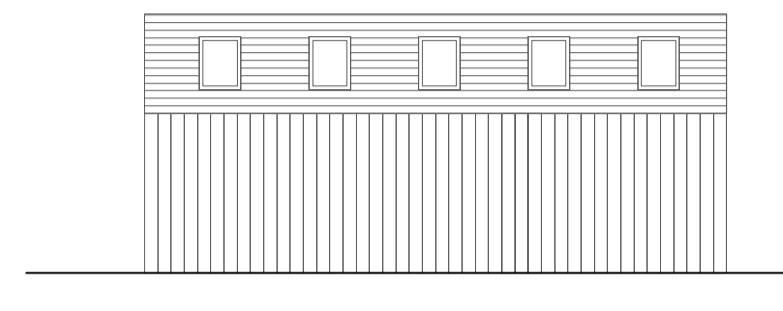
South elevation



East elevation



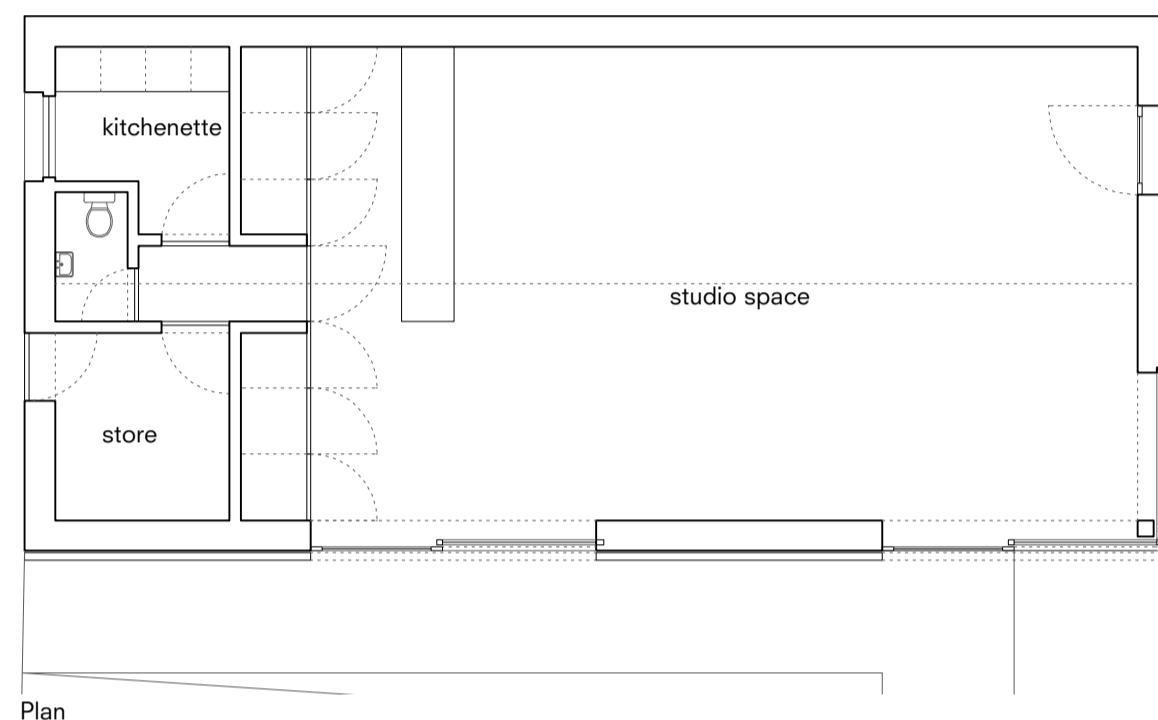
North elevation



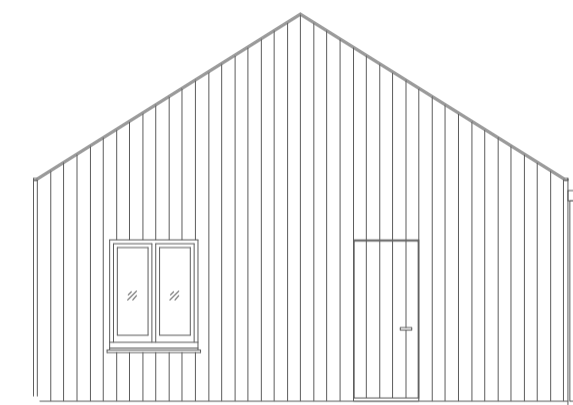
West elevation

STUDIO BUILDING

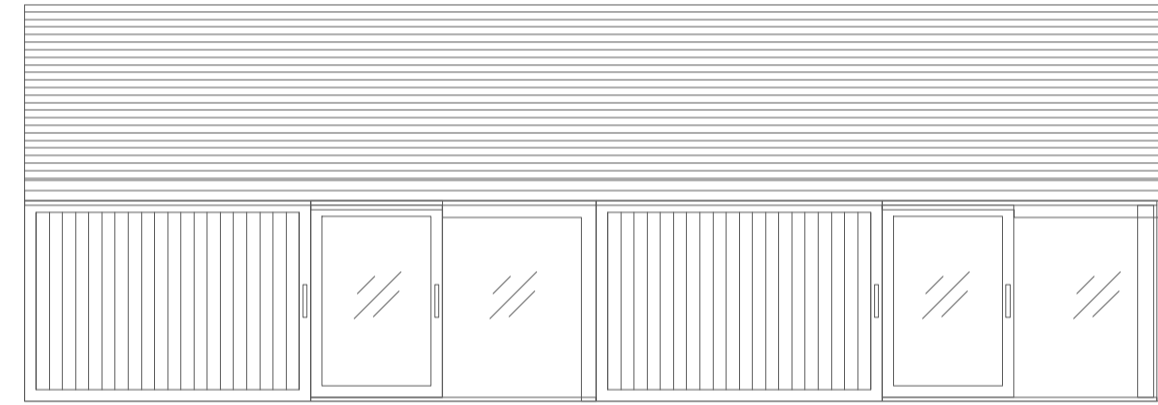
materials:
 black stained timber boarded walls
 dark slate roof with flush rooflights
 black stained timber doors
 glazed sliding doors



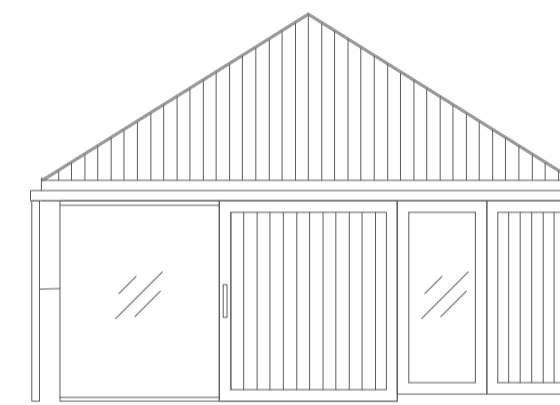
Plan



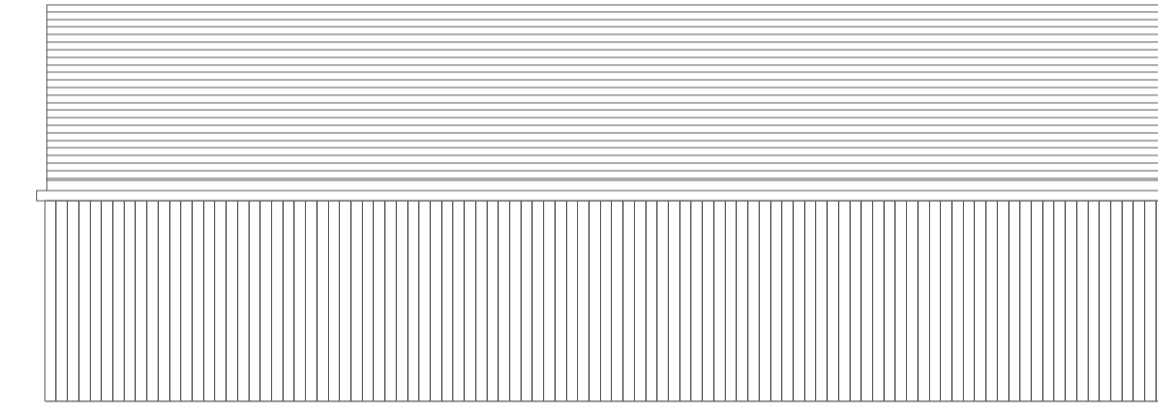
South elevation



East elevation



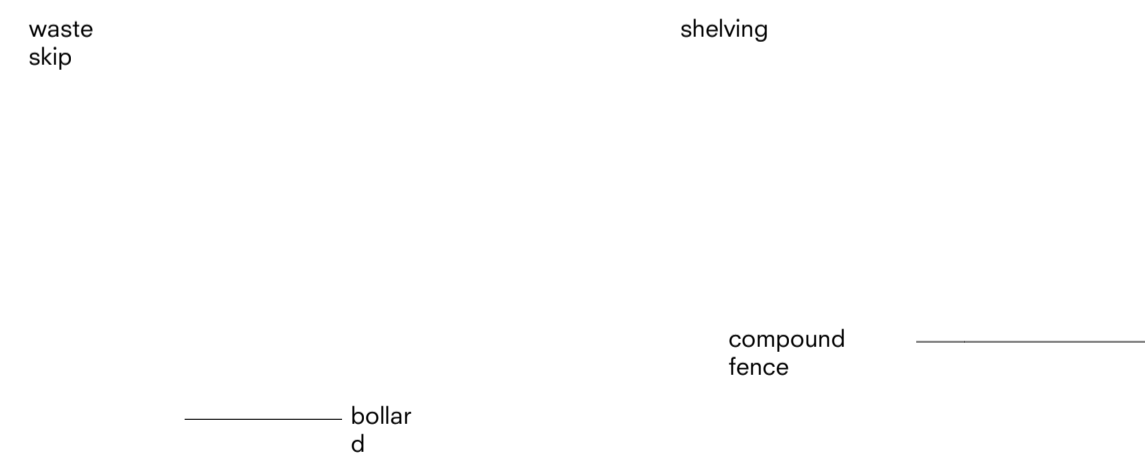
North elevation



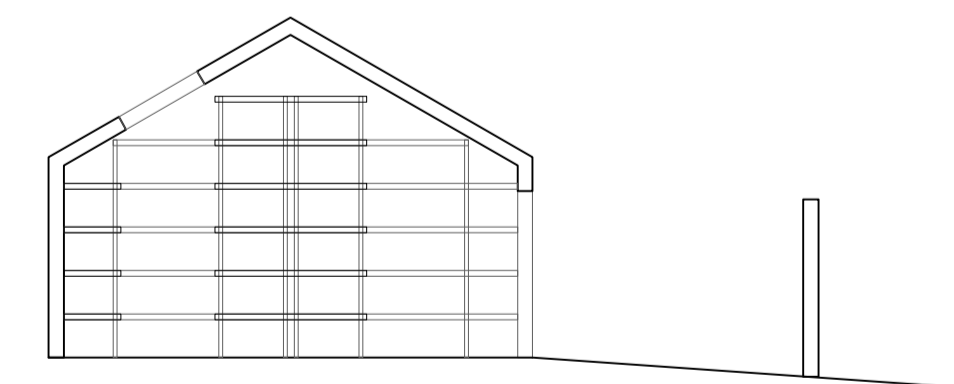
West elevation

STORE BUILDING

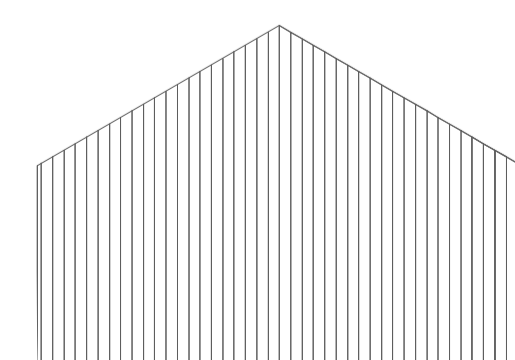
materials:
 black stained timber boarded walls
 dark slate roof with flush rooflights
 black metal roller shutters



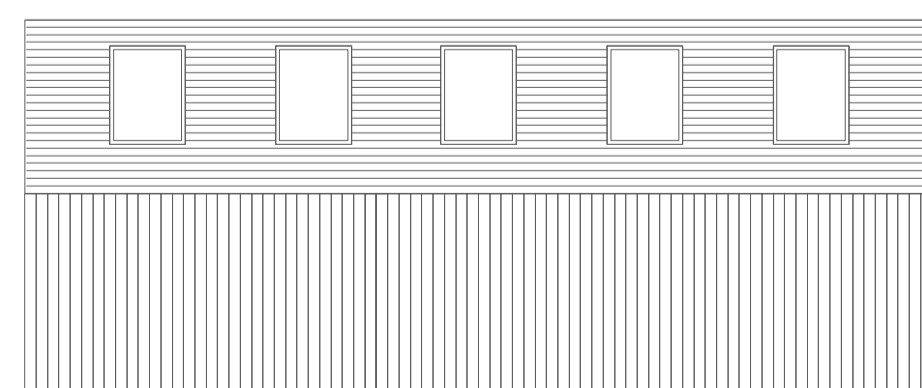
Plan



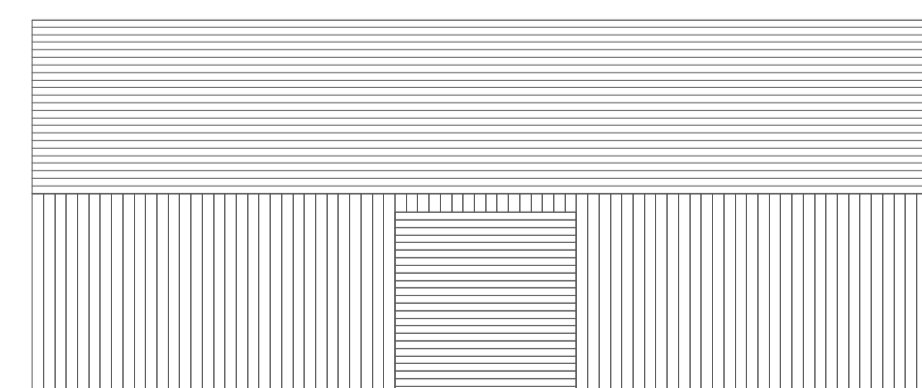
Section



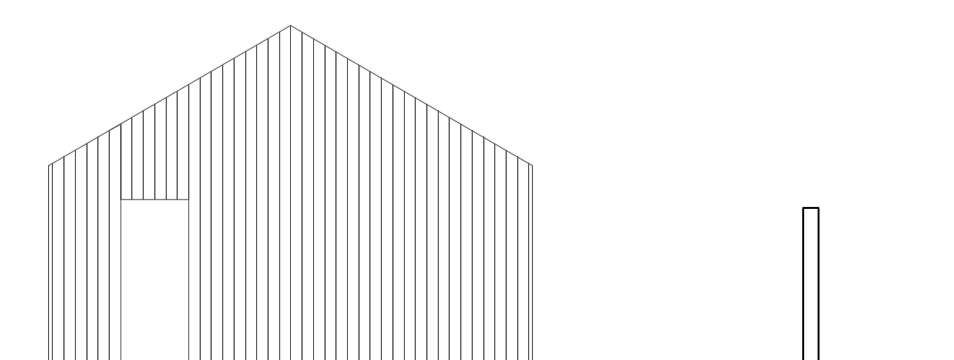
North elevation



West elevation



East elevation



South elevation



DOW JONES ARCHITECTS

10 Station Parade, Balham High Road, London, SW12 9AZ
 T 020 8675 2544
 mail@dowjonesarchitects.com
 www.dowjonesarchitects.com

Capital Gardens

Building plans and elevations
 1:100
 18.01.02
 STATUS: Planning

206-P-010

